

Property Record Card

Eagle County

**BAMIZI ENTERPRISES
LLC**

Account: R064692

Parcel: 2101-072-23-098

PRAGA NO 21 COLONIA JUAREZ
DELEGACION CUAUHTEMOC
MEXICO CITY, MEXICO 06600

Tax Area: SC202 - VAIL (TOWN) &
LIONSHEAD TIF - SC202

Situs Address:
000728 W LIONSHEAD CIR #R-512
VAIL AREA, 0

Acres: 0.019

Value Summary

Value By:	Market	Override
Land (1)	\$0	N/A
Condo (1)	\$3,175,370	N/A
Extra Feature (1)	\$4,210	N/A
Extra Feature (2)	\$4,210	N/A
Extra Feature (3)	\$3,930	N/A
Total	\$3,187,720	\$3,187,720

Legal Description

Subdivision: WDL VAIL CONDOMINIUM Unit: R-512



Sale Data

Doc. #	Sale Date	Deed Type	Validity	Verified	Sale Price	Ratio	Adj. Price	Ratio	Time Adj. Price	Ratio
201501277	01/13/2015	SWD	QV	Y	\$3,330,000	95.73	\$3,295,000	96.74	\$3,295,000	96.74

Land Occurrence 1

Abstract Code	1130 - CONDO-LAND	Percentage	100.0
Use Code	1000 - RESIDENTIAL	Neighborhood	42039 - WDL VAIL CONDOS (AK RITZ)
Land Code	11302135 - WDL VAIL CONDOS (AKA RITZ)	Super Neighborhood	4225 - LIONSHEAD CASCADE CONDO & TH
Size	0.019	Zoning	6 - CONDO

SubArea	ACTUAL	EFFECTIVE	HEATED	FOOTPRINT
Land A	0.019			
Total	0.019			

Property Record Card

Eagle County

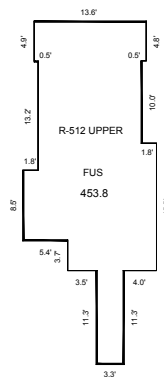
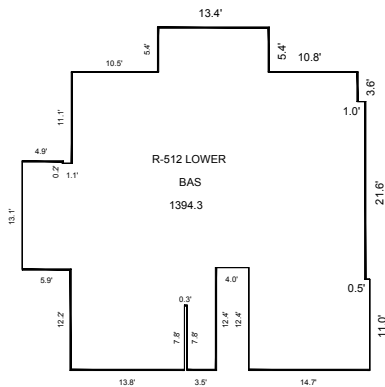
Land Occurrence 1

Value	Rate	Rate	Rate	Rate
\$0				

Condo Occurrence 1

Abstract Code	1230 - CONDOS-IMPROVEMENTS	Percentage	100
Use Code	1000 - RESIDENTIAL	Neighborhood	42039 - WDL VAIL CONDOS (AKA RITZ)
Building Type	123000 - CONDOMINIUM	Arch Style	26 - CONDO
Exterior Wall	16 - FRM STUCCO	Percentage	100
Roof Cover	6 - ASP SHGL	Roof Structure	3 - GABLE/HIP
Interior Wall	5 - DRYWALL	Percentage	100
Floor	12 - HARDWOOD	Percentage	100
Heating Fuel	3 - GAS	Heating Type	3 - FORCED AIR
Actual Year Built	2010	Bedrooms	3
Bathrooms	3	Construction Quality	7 - EXCELLENT
Effective Year Built	2010	Fixtures	9
Rooms	6	Units	1
Units	1	Super Neighborhood	4225 - LIONSHEAD-CASCADE CONDO & TH
Stories	2 - STORIES 2	Use Code	1000 - RESIDENTIAL

SubArea	ACTUAL	EFFECTIVE	HEATED	FOOTPRINT
FUS	453.8	453.8	453.8	453.8
BAS	1394.3	1394.3	1394.3	1394.3
Total	1,848.10	1,848.10	1,848.10	1,848.10
	Value	Rate	Rate	Rate
	\$3,175,370	1,718.18	1,718.18	1,718.18



Sketch by Apex IV™

Property Record Card

Eagle County

Extra Feature Occurrence 1

XFOB Code	120 - FIREPL. G.	Abstract Code	1230 - CONDOS-IMPROVEMENTS
Percentage	100	Use Code	1000 - RESIDENTIAL
Neighborhood	42039 - WDL VAIL CONDOS (AKA RITZ)		

SubArea	ACTUAL	EFFECTIVE	HEATED	FOOTPRINT
XFOB Units	1			
Total	1.00			
	Value	Rate	Rate	Rate
	\$4,210	4,210.00		

Extra Feature Occurrence 2

XFOB Code	410 - STEAM SH G	Abstract Code	1230 - CONDOS-IMPROVEMENTS
Percentage	100	Use Code	1000 - RESIDENTIAL
Neighborhood	42039 - WDL VAIL CONDOS (AKA RITZ)		

SubArea	ACTUAL	EFFECTIVE	HEATED	FOOTPRINT
XFOB Units	1			
Total	1.00			
	Value	Rate	Rate	Rate
	\$4,210	4,210.00		

Extra Feature Occurrence 3

XFOB Code	340 - HYDR-TUB G	Abstract Code	1230 - CONDOS-IMPROVEMENTS
Percentage	100	Use Code	1000 - RESIDENTIAL
Neighborhood	42039 - WDL VAIL CONDOS (AKA RITZ)		

SubArea	ACTUAL	EFFECTIVE	HEATED	FOOTPRINT
XFOB Units	1			
Total	1.00			
	Value	Rate	Rate	Rate
	\$3,930	3,930.00		

Abstract Summary

Code	Classification	Actual Value	Taxable Value	Actual Override	Taxable Override
1130	CONDO-LAND	\$0	\$0	NA	NA
1230	CONDOS-IMPROVEMENTS	\$3,187,720	\$253,740	NA	NA
Total		\$3,187,720	\$253,740	NA	NA